

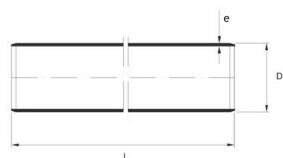
SMARTLINE PIPE



PRODUCT DESCRIPTION

Smartline is made of Polypropylene (PP) with thermoplastic elastomer (TPE) sealing rings, which, due to the construction, always remain securely in place. The result is a perfectly sealed connection that looks smoother and more elegant.

MEASUREMENT DRAWING



Article no.	Description	Tube Ø	Wall thickness	Length
70000461	PP SMARTLINE PIPE 40 W/O SOCKET 1M	40 mm	1,8 mm	1 m
70000462	PP SMARTLINE PIPE 40 W/O SOCKET 3M	40 mm	1,8 mm	3 m