

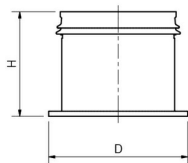
## SMARTLINE STOP



### PRODUCT DESCRIPTION

Smartline is made of Polypropylene (PP) with thermoplastic elastomer (TPE) sealing rings, which, due to the construction, always remain securely in place. The result is a perfectly sealed connection that looks smoother and more elegant.

### MEASUREMENT DRAWING



Article no.	Description	Diameter	Info
70000584	PP SMARTLINE END CAP 40 INSIDE GW	40 mm	TPE seal