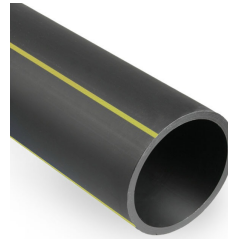
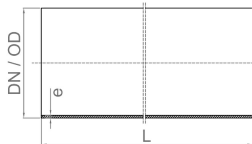


PE100RC GAS PIPES PN16 SDR11

Standard EN 1555-2:2010



MEASUREMENT DRAWING



| Article number | Outer diameter (DN/OD) | Inner-diameter | Length | Wall thickness (e) | SDR class | Transport | Quantity on pallet pcs |
|----------------|------------------------|----------------|--------|--------------------|-----------|-----------|------------------------|
| 70012281 | 40 mm | 32,6 mm | 100 m | 3,7 mm | SDR 11 | coil | 6 |
| 70012293 | 63 mm | 51,4 mm | 100 m | 5,8 mm | SDR 11 | coil | 1 |
| 70012282 | 90 mm | 73,6 mm | 12 m | 8,2 mm | SDR 11 | rigid | 28 |
| 70012289 | 110 mm | 90 mm | 12 m | 10 mm | SDR 11 | rigid | 29 |
| 70012294 | 110 mm | 90 mm | 100 m | 10 mm | SDR 11 | coil | 1 |
| 70012291 | 160 mm | 130,8 mm | 12 m | 14,6 mm | SDR 11 | rigid | 20 |
| 70012279 | 200 mm | 163,6 mm | 12 m | 18,2 mm | SDR 11 | rigid | 6 |
| 70012290 | 250 mm | 204,6 mm | 12 m | 22,7 mm | SDR 11 | rigid | 4 |

Pipelife Estonia

Põrguvälja tee 4, Lehmja, Rae vald · 75306 Harjumaa
 Telephone: +372 605 5160

e-mail: pipelife@pipelife.ee · [Privacy policy](#) · [Cookie information](#)