

INSTALLATION CONDUITS AND CABLE DUCTS

Installation conduits and cable ducts
for Nordic conditions.

Product information is maintained at pipelife.fi

PIPELIFE 
always part of your life

PIPELIFE ELECTRICAL CONDUITS AND CABLE DUCTS

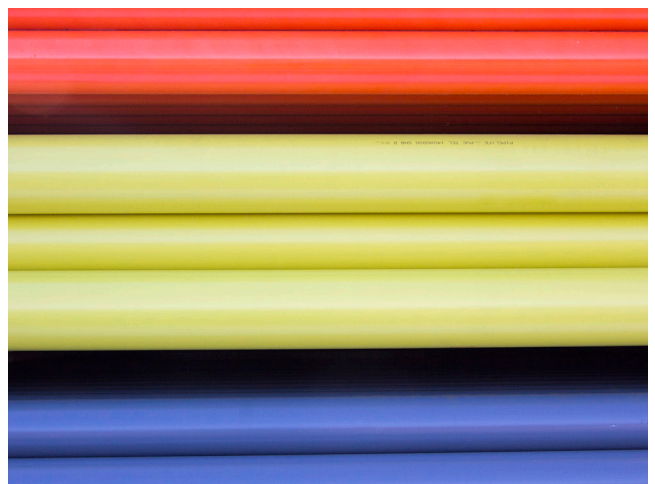
Pipelife Finland's electrical conduit and cable duct products include the right choice for protecting electrical installations inside building structures and protecting underground electric/data cables. Our product portfolio also includes pre-wired conduits, cable troughs, jointing chambers, cable ploughing ducts, channel systems and pipe elements for temporary protection.

INSTALLATION CONDUITS

With Pipelife installation conduits, installation is fast and efficient. We manufacture installation conduits with the following diameters: Ø 16, Ø 20, Ø 25, Ø 32, Ø 40 and Ø 50 mm. The products comply with the requirements of SFS-EN 61386-1 and the FI and S certification requirements, and they are CE marked. All of our installation conduits with the classification of 750 N/5 cm can be used in concrete pouring.

CABLE DUCTS

Pipelife Finland's extensive cable duct selection includes the right choice for protecting electric, telecommunications and data cables. We provide cable ducts made from PVC and PE in strength classes SN8/B, SN16/A, SN30 and SN64. Due to their structure and properties, the Pipelife cable ducts can be used all year round when building demanding networks under Nordic conditions.



FAST AND EFFICIENT INSTALLATION WITH INSTALLATION CONDUITS

With Pipelife installation conduits, installation is fast and efficient. Installation conduits are manufactured in Finland in diameters Ø16-Ø50 mm. Our products are suitable for the local climate and installation method. The products comply with the requirements of SFS-EN 61386-1 and the FI and S certification requirements, and they are CE marked. All of our installation conduits with the classification of 750 N/5 cm can be used in concrete pouring.

ELLI JM AND ELLI JM TOPSPEED

Elli JM installation conduits are made from durable PVC. The JM conduits can be used in applications requiring mechanical strength, such as concrete pouring. The structure of Elli JM Topspeed improves installation comfort. The inside of the pipe is silicone, which reduces tractive resistance during wiring and makes using a bending spring easier. The pipe length is 2.5 m.

ELLI TAM AND ELLI TAM TOPSPEED

The flexible Elli TAM installation conduits are made from durable PVC. Due to their excellent properties, Elli TAM and Elli TAM Topspeed are excellent for construction and renovation sites. The inside of Elli TAM Topspeed is silicone, which reduces tractive resistance. Lower tractive resistance provides major benefits when using a bending spring and during wiring.

Elli conduits

SFS-EN 61386-1, EN 61386-21 ja EN 61386-22

- PVC
- 750N

SÄHKÖNUMERO ID	PIPELIFE ID	TYPE/SPECIFICATIONS	PACKAGE M
Elli JM			
The pipe length is 2.5 m			
1101016	70000762	JM 16 / 13,70 Topspeed	100/3000
1101021	70000767	JM 20 / 16,90 Topspeed	100/2000
1101025	70000770	JM 25 / 21,40 Topspeed	50/1250
1101032	70000772	JM 32 / 27,80	25/875
1101040	70000773	JM 40 / 35,40	25/600
1101050	70000774	JM 50 / 44,30	17,5/350
Elli TAM			
1100016	70000745	TAM 16 / 10,45	100/2000
1100019	70000750	TAM 20 / 13,90	50/1200
1100020	70000747	TAM 20 / 13,90	100/1200
1100021	70000753	TAM 20 / 13,90 Topspeed	100/1200
1100025	70000749	TAM 25 / 18,15	50/1000
1100026	70000754	TAM 25 / 18,15 Topspeed	50/1000
1100032	70000751	TAM 32 / 24,50	25/375



HALOGEN-FREE (HF) INSTALLATION CONDUITS

The halogen-free Pipelife Halovolt® installation conduits can be used at all construction sites. They have been designed particularly for applications where improved fire safety is a requirement for construction products. Hal-ogen-free installation pipes are a fireproof solution. HF conduits are used in hospitals, nursing homes, shipbuilding and other sites where large numbers of people are expected to reside.

The conduits can be used in concrete casting and other flush/surface mounting applications indoors. Pipelife Finland's hal-ogen-free installation conduits are manufactured and tested according to the following standards: general requirements for installation conduits (SFS-EN 61386-22 A11), halogen-free test (DIN VDE 0604-2-100:2012), low smoke generation test (IEC 61034-2:2005) and chemical-free test (IEC 62321-3-1:2013).

Halogen-free installation conduits

SFS-EN 61386-1, SFS-EN 61386-21, SFS-EN 61386-22

- High quality halogen-free products for electrical installation
- Nordic Poly Mark Quality marked HF pipes ensure the requirements for the halogen-free pipe
- The product fill the Construction Products Regulation CPR's requirements
- Classification 750N

SÄHKÖNUMERO ID	PIPELIFE ID	TYPE/SPECIFICATIONS	PACKAGE M
HF JM Halovolt luranyi			
1105016	70000732	HF JM 16/13,00 3 m Halovolt	72/4320
1105020	70000733	HF JM 20/17,00 3 m Halovolt	72/2880
1105025	70000734	HF JM 25/21,60 3 m Halovolt	57/2280
1105032	70000735	HF JM 32/28,20 3 m Halovolt	30/1350
1105040	70000736	HF JM 40/35,80 3 m Halovolt	30/630
1105050	70000737	HF JM 50/45,40 3 m Halovolt	21/504
HF TAM Halovolt PP			
1105316	70000755	*HF TAM 16/10,45 Halovolt	100/2000
1105320	70000756	*HF TAM 20/13,90 Halovolt	100/1800
1105325	70000757	*HF TAM 25/17,60 Halovolt	50/1600
1105332	70000759	HF TAM 32/25,10 Halovolt	25/600
1105340	70000760	HF TAM 40/32,00 Halovolt	25/300
1105350	70000761	HF TAM 50/40,20 Halovolt	25/250
HF JM Halovolt PP			
1100000	70004431	■HF JM 16/11,5 2,5 m Halovolt	100/3000
1100001	70000765	■HF JM 20/15,4 2,5 m Halovolt	100/2000
1100002	70004432	■HF JM 25/19,8 2,5 m Halovolt	50/1250
1100003	70004433	HF JM 32/26,6 2,5 m Halovolt	25/875
1100004	70004434	HF JM 40/34,1 2,5 m Halovolt	25/600
1100005	70004435	HF JM 50/43,3 2,5 m Halovolt	17,5/350
HF JM bending springs			pcs
6403071	V82MPHFJM20	20/15,4	1
6403072	V82MPHFJM16	16/11,5	1
6403073	V82MPHFJM25	25/19,8	1

* Nordic Poly Mark marked product. Product fill the requirements for the halogen-free pipe according to standard SFS-EN 50642: 2018.

■ Bending installation conduits requires a bending spring which fits the pipe's inner dimension. Look at the table item HF JM bending springs.


Nordic Poly Mark



SÄHKÖNUMERO

ID	PIPELIFE ID	TYPE/SPECIFICATIONS	PAKKAUS PCS
HF bends and extensions			
1100006	70017298	JM HF 16 Bend 90°	10
1100007	70017299	JM HF 20 Bend 90°	10
1100008	70017300	JM HF 25 Bend 90°	10
1100009	70017301	JM HF 32 Bend 90°	6
1100010	70017302	JM HF 40 Bend 90°	6
1100011	70017303	JM HF 50 Bend 90°	4
1105070	70000236	HF 16 extension, TAM pipe	100
1105071	70000237	HF 20 extension, TAM pipe	100
1105072	70000238	HF 25 extension, TAM pipe	50
1105073	70000239	HF 32 extension, TAM pipe	25
1105074	70000240	HF 40 extension, TAM pipe	25
1105075	70000241	HF 50 extension, TAM pipe	15



PREFLEX ELECTRIC CONDUITS

SFS-EN 61386-1, SFS EN 61386-22

Preflex is a flexible, pre-wired or pre-cabled electric conduit. The Preflex product range includes the most common ML and MMJ cables, COAX and CAT antenna cables, and COAX + CAT combination cables. Our product selection also includes low voltage KLMA cables. The products can be used for electrical installation inside base floors, roof structures, concrete structures and wall structures in new or renovated buildings. The installation conduits are manufactured from flexible and durable polypropylene. When using pre-wired conduits, the entire wiring step will be eliminated, which provides savings in installation time. We also manufacture HF options of the conduits. Ask also Preflex Spider concept: Prefabricated conduits, with measured to exact installation lengths or pre-installed connection boxes.



SÄHKÖNUMERO ID	PIPELIFE ID	TYPE/SPECIFICATIONS	PACKAGE M
ML conduits			
0428700	70002061	16 / ML 3 x 1,5 S Eca	100/2800
0428702	70002739	16 / ML 3 x 2,5 S Eca	100/2800
0428706	70002740	16 / ML 5 x 1,5 S Eca	100/2800
0428704	70004766	16 / ML 4 x 1,5 S Eca	100/2400
0428701	70003312	20 / ML 3 x 1,5 S Eca	100/2400
0428707	70003316	20 / ML 5 x 1,5 S Eca	100/2400
0428703	70003314	20 / ML 3 x 2,5 S Eca	100/2400
0428708	70005025	20 / ML 5 x 2,5 S Eca	100/2400
0428709	70003354	20 / ML 5 x 2,5 S Eca	50/1200
0428712	70003744	20 / ML 7 x 1,5 S Eca	100/2400
ML-HF conduits			
0428721	70016794	16/ML HF 3 x 1,5 S Cca	100/2800
0428722	70016795	16/ML HF 3 x 2,5 S Cca	100/2800
0428723	70016796	16/ML HF 5 x 1,5 S Cca	100/2800
0428733	70016809	16/ML HF 4 x 1,5 S Cca	100/2400
0428724	70016797	20/ML HF 3 x 1,5 S Cca	100/2400
0428725	70016798	20/ML HF 3 x 2,5 S Cca	100/2400
0428727	70016800	20/ML HF 5 x 1,5 S Cca	100/2400
0428729	70016801	20/ML HF 5 x 2,5 S Cca	50/1200
0428726	70016799	20/ML HF 4 x 1,5 S Cca	100/1500
0428731	70016802	20/ML HF 7 x 1,5 S Cca	100/2400
0428732	123456789	20/ML HF 7 x 1,5 S Cca	50/1200
MMJ conduits			
0411143	70020278	20 / MMJ 3 x 1,5 S Eca	100/1200
0411144	70020279	20 / MMJ 3 x 2,5 S Eca	100/1200
0411145	70020280	20 / MMJ 5 x 1,5 S Eca	100/1200
0411146	70020281	20 / MMJ 5 x 2,5 S Eca	100/1200
MMJ-HF conduits			
0411147	70020283	20 / MMJ 3 x 1,5 S Dca	100/2400
0411148	70020284	20 / MMJ 3 x 2,5 S Dca	100/2400
0411149	70020285	20 / MMJ 5 x 1,5 S Dca	100/2400
0411151	70020286	20 / MMJ 5 x 2,5 S Dca	100/2400
COAX & CAT conduits			
0222600	70004767	16 / Coax CCS Eca	100/2800
0222634	70001548	16 / Coax CU Eca	100/2800
0222603	70004781	20 / 2xCAT6 UTP Eca	100/2400
0222604	70002766	20 / 2xCAT6 UTP + COAX CCS Eca	100/2400
0222633	70002767	20 / 2xCAT6 UTP + COAX CU Eca	100/2400
COAX, CAT & KLMA HF conduits			
0222637	70016807	16 / COAX CU Cca	100/2800
0222638	70016808	20 / 2xCAT6 UTP Dca	100/2400
0222636	70016806	20 / 2xCAT6 UTP+COAX Dca	100/2400
0222641	70020282	20 / KLMA 4 x 0,8+0,8 Dca	100/2400
0222639	70017063	20 / 2xCAT6 U/UTP Cca	100/2400
0222640	70017064	25 / 2xCAT6+COAX CU Cca	100/2400

CABLE DUCTS FOR PROTECTING ELECTRIC, TELECOMMUNICATIONS AND DATA CABLES

Pipelife Finland's extensive cable duct selection includes the right choice for protecting electric, telecommunications and data cables. We provide cable ducts made from PVC and PE in strength classes SN8/B, SN16/A, SN30 and SN64. Due to their structure and properties, the Pipelife cable ducts can be used all year round when building demanding networks under Nordic conditions.

PVC cable ducts

SFS 5608

- PVC underpass ducts are structurally durable, rigid in the longitudinal direction, highly resistant to tensile stress during cabling and highly resistant to frictional heat.
- Ø 50 - 160 mm OPTO sleeve (seal), Ø 140 mm TEL sleeve (no seal)

SÄHKÖNUMERO ID	PIPELIFE ID	TYPE/SPECIFICATIONS	COLOUR	PACKAGE M
5261413	70003318	OPTO 50 x 3000 SN8/B	Red	324
5261515	70000673	OPTO 50 x 6000 SN8/B	Yellow	648
5261550	70000679	OPTO 50 x 6000 SN8/B	Red	648
5261429	70000681	OPTO 50 x 6000 SN8/B	Green	648
5261428	70000680	OPTO 50 x 6000 SN8/B	Grey	648
5261517	70000674	OPTO 75 x 6000 SN8/B	Yellow	438
5261557	70003334	OPTO 75 x 6000 SN8/B	Red	438
5261426	70000675	OPTO 75 x 6000 SN8/B	Green	438
5261491	70016803	OPTO 75 X 6000 SN16/A	Yellow	438
5261492	70017083	OPTO 75 X 6000 SN16/A	Red	438
5261520	70003326	OPTO 100 x 6000 SN8/B	Yellow	264
5261560	70000682	OPTO 100 x 6000 SN8/B	Red	264
5261510	70001163	OPTO 100 x 6000 SN8/B	Grey	264
5261521	70003327	OPTO 100 x 6000 SN16/A	Yellow	264
5261561	70001184	OPTO 100 x 6000 SN16/A	Red	264
5261511	70001164	OPTO 100 x 6000 SN16/A	Grey	264
5261523	70001169	OPTO 110 x 6000 SN8/B	Yellow	240
5261423	70000683	OPTO 110 X 6000 SN8/B	Red	240
5261424	70001165	OPTO 110 x 6000 SN8/B	Green	240
5261414	70001168	OPTO 110 x 6000 SN8/B	Grey	240
5261524	70001170	OPTO 110 x 6000 SN16/A	Yellow	240
5261438	70001185	OPTO 110 x 6000 SN16/A	Red	240
5261425	70001166	OPTO 110 x 6000 SN16/A	Green	240
5261427	70001167	OPTO 110 x 6000 SN16/A	Grey	240
5261529	70000677	• TEL 140 x 6000 SN8/B	Yellow	138
5261530	70001171	• TEL 140 x 6000 SN16/A	Yellow	138
5261415	70003329	OPTO 160 x 6000 SN8/B	Yellow	120

• Sealed with an O ring, 120 x 3.5 mm, as necessary; not included in the delivery.



PVC underpass ducts

SÄHKÖNUMERO ID	PIPELIFE ID	SPECIFICATIONS	COLOUR	PACKAGE M
5261401	70000671	100 x 4,8 x 6000 SN30	Orange	264
5261402	70000672	110 x 5,3 x 6000 SN30	Orange	240
5261445	70000676	110 x 5,3 x 6000 SN30	Yellow	240
5261439	70003325	140 x 6,7 x 6000 SN30	Orange	138



PVC cable troughs

SFS 7505

SÄHKÖNUMERO ID	PIPELIFE ID	SPECIFICATIONS	COLOUR	PACKAGE M
5261420	70003331	75 x 1040 SN16	Yellow	552
5261440	70003332	90 x 1040 SN16	Yellow	483
5261421	70003335	75 x 1040 SN16	Red	552
5261441	70003336	90 x 1040 SN16	Red	483
5261436	70003333	75 x 1000 SN8	Yellow	552
5261443	70003337	75 x 1000 SN8	Red	552



PVC bends

SFS 5733

- Strength class SN8/B
- Ø 50 - 160 mm OPTO sleeve (seal), Ø 140 mm TEL sleeve (no seal)

SÄHKÖNUMERO ID	PIPELIFE ID	TYPE/SPECIFICATIONS	R*	COLOUR	PACKAGE PCS
5261652	70001159	OPTO-bend 50 x 45°	700	Red	150
5261653	70001160	OPTO-bend 50 x 90°	1000	Red	150
5261654	70001162	OPTO-bend 100 x 90°	750	Red	40
5261650	70001151	OPTO-bend 50 x 45°	1000	Red	150
5261651	70001152	OPTO-bend 50 x 90°	1000	Red	100
5261657	70001153	OPTO-bend 75 x 45°	1000	Red	40
5261658	70001154	OPTO-bend 75 x 90°	1000	Red	40
5261662	70004411	OPTO-bend 75 x 45°	1000	Yellow	40
5261663	70004412	OPTO-bend 75 x 90°	1000	Yellow	40
5261660	70001155	OPTO-bend 100 x 45°	900	Red	40
5261661	70001156	OPTO-bend 100 x 90°	900	Red	40
5261613	70001147	OPTO-bend 110 x 45°	1000	Yellow	40
5261614	70001148	OPTO-bend 110 x 90°	1000	Yellow	40
5261620	70002095	OPTO-bend 140 x 45°	1200	Yellow	24
5261621	70002096	OPTO-bend 140 x 90°	1000	Yellow	24
5261689	70007589	PVC-bend 160 x 90°	200	Red	10
5261687	70007590	PVC-bend 200 x 90°	200	Red	8

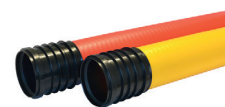
* Bending radius



VIPER3 Triple wall pipes

SFS 5608

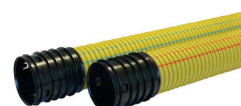
SÄHKÖNUMERO ID	PIPELIFE ID	TYPE/SPECIFICATIONS	COLOUR	PACKAGE M
5261502	70000779	VIPER3 PE 110 SN8/B	Yellow	300
5261504	70000776	VIPER3 PE 110 SN8/B	Red	300
5261516	70000781	VIPER3 PE 110 SN8/B	Green	300
5261519	70000782	VIPER3 PE 110 SN8/B	Orange	300
5261604	70020090	VIPER3 PE 110 SN8/B	Grey	95
5261503	70000780	VIPER3 PE 110 SN16/A	Yellow	300
5261506	70000775	VIPER3 PE 110 SN16/A	Red	300
5261518	70000777	VIPER3 PE 110 SN16/A	Green	300
5261609	70020089	VIPER3 PE 110 SN16/A	Grey	95
5261602	70019878	VIPER3 PE 140 SN8/B	Yellow	122
5261601	70019877	VIPER3 PE 140 SN16/A	Yellow	122
5261507	70000783	VIPER3 PE 160 SN8/B	Yellow	120
5261508	70000778	VIPER3 PE 160 SN16/A	Yellow	120
PACKAGE PCS				
5261580	70000043	Grommet 110 / 138	Black	55/440
5261582	70000044	Grommet 160 / 186	Black	35/280



Douple wall pipes

SFS 5608

SÄHKÖNUMERO ID	PIPELIFE ID	TYPE/SPECIFICATIONS	COLOUR	PACKAGE M
5261449	70012206	TUPLA 75 x 6000 450 N	Yellow	432
5261450	70004413	TUPLA 75 x 6000 750 N	Yellow	432
5261570	70001340	TUPLA 110 x 6000 SN8/B	Yellow	300
5261574	70001342	TUPLA 110 x 6000 SN8/B	Red	300
5261564	70003368	TUPLA 110 x 6000 SN8/B	Grey	300
5261572	70001333	TUPLA 110 x 6000 SN16/A	Yellow	300
5261575	70001332	TUPLA 110 x 6000 SN16/A	Red	300
5261432	70001334	TUPLA 110 x 6000 SN16/A	Green	300
5261565	70001336	TUPLA 110 x 6000 SN16/A	Grey	300
5261600	70019876	TUPLA 140 x 6000 SN8/B	Yellow	122
5261589	70019875	TUPLA 140 x 6000 SN16/A	Yellow	122
5261571	70001343	TUPLA 160 x 6000 SN8/B	Yellow	120
5261573	70001337	TUPLA 160 x 6000 SN16/A	Yellow	120
5261577	70019379	TUPLA 200 x 6000 SN8/B	Yellow	84



Bends

• SN8/B

SÄHKÖNUMERO ID	PIPELIFE ID	TYPE/SPECIFICATIONS	R*	COLOUR	PACKAGE PCS
5261437	70000522	Bend PE 50 x 0-90°	1000	630	116
5261668	70000523	Bend PE 75 x 0-90°	1000	800	5/120
5261674	70000524	▪Bend PE 110 x 0-90°	1700	800	50
5261603	70020091	▪Bend PE 140 x 0-90°	1700	800	50
5261676	70000525	▪Bend PE 160 x 0-90°	1700	800	20

* Bending radius

▪ Seal at both ends of the pipe. Suitable for Tupla, Triple and PVC pipes.



Flexible PE ducts

SFS-EN-61386-24

• N450

SÄHKÖNUMERO ID	PIPELIFE ID	TYPE/SPECIFICATIONS	DRAW THREAD	COLOUR	PACKAGE M
5261536	70000922	PE 50 / 42 450 N	Yes	Yellow	50/700
5261525	70000784	PE 50 / 42 450 N	Yes	Red	50/700
5261452	70004414	PE 75 / 61 450 N	Yes	Yellow	50/1000
5261501	70011995	PE 110 / 98 450 N	Yes	Yellow	50/200



OPTO ploughing ducts

SÄHKÖNUMERO ID	PIPELIFE ID	TYPE/SPECIFICATIONS	COLOUR	PACKAGE
5262045	70000596	OPTO ploughing 50 / 41 SN64	Black	1200M/K24
5262022	70000595	OPTO ploughing 40 / 32,6 SN64	Black	2000M/K24
5262018	70000597	OPTO ploughing 32 / 26 SN64	Black	2500M/K24
5262000	70004299	OPTO coupler connector 32 / 32 bayonet	Grey	70 PCS
5262078	70001874	OPTO coupler connector 40 / 40 bayonet	Grey	60 PCS
5262001	70004300	OPTO coupler connector 50 / 50 bayonet	Grey	30 PCS



Cable cover tape

SÄHKÖNUMERO ID	PIPELIFE ID	TYPE/SPECIFICATIONS	COLOUR
6464000	70000075	125x1,5mm 50m	Yellow
6464001	70000076	300x1,5mm 50m	Yellow



ROCKY cable ducts - Black

- ROCKY PE ducts are designed for protection in demanding applications
- ROCKY cable duct black with white stripe is suitable for surface mounting
- Pipe marking "sähkökaapeli-kraftkabel" and s electrical danger - warning sign

SÄHKÖNUMERO ID	PIPELIFE ID	TYPE/SPECIFICATIONS	PACKAGE M	
Black pipe with white stripe				
5261546	70001089	75 x 4,5 SRS	6 / 288	Pole
5261547	70001090	75 x 6,8 SRE	6 / 228	Pole
5261537	70001071	75 x 4,5 SRS	100	Coil
5261538	70001072	75 x 6,8 SRE	100	Coil
5261539	70001073	75 x 4,5 SRS	200	XL-Coil
5261545	70001074	75 x 6,8 SRE	200	XL-Coil
5261553	70001091	110 x 6,6 SRS	6 / 174	Pole
5261554	70001092	110 x 10,0 SRE	6 / 174	Pole
5261531	70001075	110 x 6,6 SRS	100	Coil
5261533	70001076	110 x 10,0 SRE	100	Coil
5261534	70001077	110 x 6,6 SRS	300	XL-Coil
5261527	70001078	110 x 10,0 SRE	300	XL-Coil
5261555	70001094	125 x 7,4 SRS	6/ 156	Pole
5261556	70001095	125 x 11,4 SRE	6/ 156	Pole
5261535	70001081	125 x 7,4 SRS	100	Coil
5261528	70001082	125 x 11,4 SRE	100	Coil
5261548	70001096	140 x 8,3 SRS	6 / 90	Pole
5261549	70001097	140 x 12,7 SRE	6 / 90	Pole
5261551	70001083	140 x 8,3 SRS	max. 430	Lorry reel*
5261552	70001084	140 x 12,7 SRE	max. 430	Lorry reel*
5261435	70001098	160 x 14,6 SRE	6 / 78	Pole
5261430	70001079	160 x 9,5 SRS	max. 370	Lorry reel*
5261431	70001080	160 x 14,6 SRE	max. 370	Lorry reel*
5261497	70019322	200 x 11,9 SRS	6	Pole
5261498	70019323	200 x 11,9 SRS	12	Pole
5261499	70019324	200 x 18,2 SRE	6	Pole
5261569	70019325	200 x 18,2 SRE	12	Pole



We can also manufacture other package sizes on order.

ROCKY SRS, ring stiffness 16 kN/m², for protecting underground cables or cables passing under waterways.

ROCKY SRE, ring stiffness 64 kN/m², for protecting surfacemounted cables.

ROCKY cable ducts - yellow

- ROCKY PE ducts are designed for protection in demanding applications
- ROCKY cable duct yellow with red stripe is suitable for surface mounting
- Pipe marking "sähkökaapeli-kraftkabel" and s electrical danger - warning sign

SÄHKÖNUMERO ID	PIPELIFE ID	TYPE/SPECIFICATIONS	PACKAGE M	
Yellow pipe with red stripe				
5261453	70004464	63 X 3,8 SRS	100	Coil
5261454	70004465	75 x 4,5 SRS	100	Coil
5261455	70004467	75 x 4,5 SRS	200	Coil
5261456	70004479	75 x 4,5 SRS	6/288	Pole
5261457	70004490	75 x 4,5 SRS	max. 1400	Lorry reel*
5261458	70004468	75 x 6,8 SRE	200	Coil
5261459	70004480	75 x 6,8 SRE	6/288	Pole
5261460	70004466	75 x 6,8 SRE	100	Coil
5261461	70004470	110 x 10,0 SRE	100	Coil
5261462	70004482	110 x 10,0 SRE	6/174	Pole
5261463	70004492	110 x 10,0 SRE	max. 700	Lorry reel*
5261464	70004491	110 x 6,5 SRS	max. 700	Lorry reel*
5261465	70004469	110 x 6,6 SRS	100	Coil
5261466	70004471	110 x 6,6 SRS	300	Coil
5261467	70004481	110 x 6,6 SRS	6/174	Pole
5261468	70004472	110 x 10,0 SRE	300	Coil
5261469	70004485	125 x 11,4 SRE	6/156	Pole
5261470	70004475	125 x 7,4 SRS	100	Coil
5261471	70004484	125 x 7,4 SRS	6/156	Pole
5261472	70004476	125 x 11,4 SRE	100	Coil
5261473	70004487	140 x 12,7 SRE	6/90	Pole
5261474	70004478	140 x 12,7 SRE	max. 430	Lorry reel*
5261475	70004483	140 x 8,3 SRS	12/430	Pole
5261476	70004486	140 x 8,3 SRS	6/90	Pole
5261477	70004477	140 x 8,3 SRS	max. 430	Lorry reel*
5261478	70004488	160 x 14,6 SRE	6/78	Pole
5261479	70004474	160 x 14,6 SRE	370	Lorry reel*
5261480	70004473	160 x 9,5 SRS	370	Lorry reel*
5261578	70019534	200 x 11,9 SRS	6	Pole
5261579	70019535	200 x 11,9 SRS	12	Pole
5261587	70019536	200 x 18,2 SRE	6	Pole
5261588	70019537	200 x 18,2 SRE	12	Pole



We can also manufacture other package sizes on order.

ROCKY PE extensions and rock clamps

SÄHKÖNUMERO

ID	PIPELIFE ID	TYPE/SPECIFICATIONS
Rocky extensiont		
5261481	70004818	Rocky PE extension 75 mm
5261482	70004819	Rocky PE extension 90 mm
5261483	70004820	Rocky PE extension 110 mm
5261484	70004821	Rocky PE extension 125 mm
5261485	70004822	Rocky PE extension 140 mm
5261486	70004823	Rocky PE extension 160 mm
Rock clamps		
5261416	70000087	Rocky Rocky rock clamp 75 mm
5261408	70000090	Rocky Rocky rock clamp 110 mm
5261407	70000089	Rocky Rocky rock clamp 125 mm
5261417	70000086	Rocky Rocky rock clamp 140 mm
5261433	70000088	Rocky Rocky rock clamp 160 mm



Arc welding sleeves

For Rocky SRS and SRE pipes

LVI ID	PIPELIFE ID	D X S	L
1836007	70004216	75	45
1836009	70004217	110	14
1836010	70000105	125	12
1836011	70000106	140	6
1836012	70000107	160	4



OPTOLIFE JOINTING CHAMBERS

Optolife jointing chambers are designed for implementing cable connections and storing cables. Optolife jointing chambers include ready-made inlets that can be easily opened without special tools. The bottom of the chamber has a bushing for cable entry. The jointing chambers are lightweight, easy to handle and quick to install, which lowers the installation costs. Optolife jointing chambers and covers (3 metric tons) are designed to withstand the most common loading norms when installed according to the instructions. Optolife jointing chambers have been designed in cooperation with partners

Optolife jointing chambers

OptoLife 1000

- Connections: 32 mm 2 pcs, 40 mm 4 pcs, 50 mm 2 pcs, 100 mm 1 pcs, 110 mm 1 pcs
- Dimensions: bottom 1000 x 1000 mm, cover 800 mm, height 400 mm

OptoLife 1200

- Connections: 40 mm 5 pcs, 50 mm 3 pcs, 40/60 mm 1 pcs ellipsi, 100 mm 1 pcs, 110 mm 1 pcs
- Dimensions: bottom 1200 x 1200 mm, cover 800 mm, height 540 mm

SÄHKÖNUMERO ID	PIPELIFE ID	TYPE/SPECIFICATIONS	COLOUR	CONNECTIONS
5262092	70001444	Jointing chamber OptoLife 1000	Black	On four sides
5262091	70001443	Jointing chamber OptoLife 1200	Black	On four sides



Jointing chamber TELE 1000

- Rotationally molded, made of PE plastic
- Standard model
 - Bottom width 1000mm height 650mm total height 1650mm
 - Cover 500mm/40tn, the height can be adjusted with a telescope
- Custom chamber:
 - Tele 1000 available also with 600mm a cover and fixed connections
 - Define other properties with chamber order card

SÄHKÖNUMERO ID	PIPELIFE ID	TYPE/SPECIFICATIONS	COLOUR	PACKAGE PCS
5262093	70000818	Jointing chamber TELE 1000	Black	1



Jointing chambers for
professional network
builders: OptoLife 1000/1200
and TELE 1000



Accessories

SÄHKÖNUMERO ID	PIPELIFE ID	TYPE/SPECIFICATIONS	COLOUR	PACKAGE M
5013001	70001808	Tower arm yoke SRN 110 / 100		30
5261568	70010843	PE extension sleeve75 Tupla	Black	10
5261509	70003366	PE extension sleeve110 Tupla	Black	30
5261512	70003367	PE extension sleeve160 Tupla	Black	18
5261513	70000521	PE extension sleeve110 Tripla/OPTO	Black	25
5261514	70001019	PE extension sleeve160 Tripla/OPTO	Black	12
5261400	70001149	Saddle tee 100/50/ 45°	Grey	20
5261404	70001150	Saddle tee 110/110/45°	Grey	8
5261585	70004399	Shield plug 110 Tripla/Tupla	Red	10
5261586	70001790	Shield plug 100 OPTO	Blue	10
5261444	70001792	Shield plug 140-160	Blue	10
5262081	70004301	Shield plug 40	Yellow	90
5261544	70004302	Shield plug 50	Yellow	90
5261434	70001039	Double sleeve 50	Grey	30
5261496	70000543	Double sleeve 75	Grey	25/600
5261406	70001158	Double sleeve 100 OPTO	Grey	6
5261446	70000527	HT PP branch 75/75-45°	Grey	32/256
5261447	70000529	HT PP branch 110/110-45°	Grey	12/96
5261448	70000549	HT PP reducer 110-75	Grey	24/576
5261488	70017044	Funnel 110	Yellow	12
5261489	70017045	Funnel 140	Yellow	12
5261490	70017046	Funnel 160	Yellow	6
2241241	70009313	Lubricant 500g		24

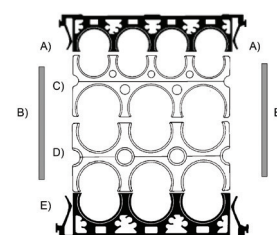


OPI channel system

A cost-efficient solution when you need to fit a large number of cable ducts in a small space

SÄHKÖNUMERO

ID	PIPELIFE ID	TYPE/SPECIFICATIONS
Intermediate combs		
5261711	70005047	AVS 3 X 75 / 3 X 75
5261714	70005048	AVS 4 x 75 / 4 x 75
5261727	70004192	AVS 5 X 75 / 5 X 75
5261728	70004193	AVS 5 X 75 / 4 X 110
5261703	70004189	AVS 2 x 110 / 2 x 110
5261702	70004188	AVS 3 X 110 / 3 X 110
5261739	70004186	AVS 4 X 100 / 4 X 100
5261701	70004187	AVS 4 x 110 / 4 x 110
5261704	70004190	AVS 3 X 160 / 3 X 160
5261705	70004191	AVS 3 X 160 / 4 X 110
Supporting combs		
5261723	70004200	FO 2 X 100
5261731	70005050	FO 2 x 110
5261732	70004201	FO 2 X 160
5261724	70005049	FO 3 X 100
5261734	70004202	FO 3 x 110
5261735	70004203	FO 3 X 160
5261736	70004204	FO 4 X 110



Channel assembly example:

- A) Supporting comb FO 4 x 110
- B) Plywood for concrete casting
- C) Intermediate comb AVS 4 x 110/3 x 160
- D) Intermediate comb AVS 3 x 160/3 x 160
- E) Supporting comb FO 3 x 160



DIVIO cable duct

- Manufacture of 100% recycled polypropylene (PP)

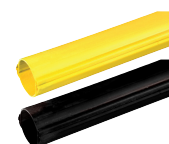
SÄHKÖNUMERO ID	PIPELIFE ID	DIMENSIONS ID X LENGTH	WEIGHT	PACKAGE PCS
Divio				
5261558	70001020	110 x 1100	2,05	35
5261559	70001021	160 x 1100	3,09	15
Lukituskiinnike				
5261563	70001022	162 x 64 x 14	0,047	170



Split PE ducts

- Interlocking; for repairing and protecting installations

SÄHKÖNUMERO ID	PIPELIFE ID	ID X LENGTH	COLOUR	PACKAGE M
5261591	70000231	50 x 5000	Yellow	550
5261581	70013901	100 x 3000	Red	168
5261583	70008103	100 x 3000	Yellow	168
5261590	70008102	100 x 3000	Black	168
5261584	70008104	110 x 3000	Yellow	159
5261493	70004303	140 x 3000	Yellow	72
5261494	70008106	140 x 3000	Yellow	72



INFORMATION ON INSTALLATION CONDUITS AND CABLE DUCTS



STRENGTH CLASSES

The systems can be used in a variety of environments under a variety of conditions. The products can be used in both heavily- and lightly-trafficked areas. Cable ducts are categorised according to SFS 5608 based on their ring stiffness and impact resistance as follows:

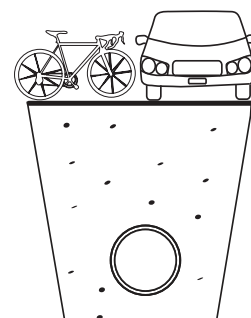
- SN 8/B (8 kN/m²)
- SN 16/A (16 kN/m²)
- Underpass duct SN 30 (30 kN/m²)

CHOOSING THE CORRECT STRENGTH CATEGORY

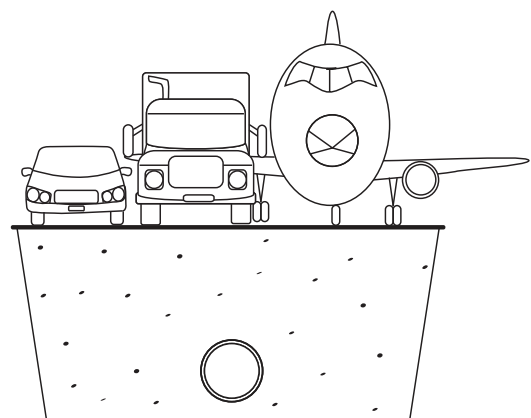
• SN16/A ducts are used in heavy duty traffic area application in trafficked areas. They are used in ground-supported ducts and channels protected with sand in areas with heavy traffic, and in installations going under streets, railroads or roads. Ring stiffness >16 kN/m².

• SN8/B ducts are used in Medium heavy traffic area application in groundsupported ducts outside heavily trafficked areas, and in installations going under pedestrian and bicycle routes. They can also be used in heavily-trafficked areas if the ducts are protected with concrete. Ring stiffness > 8 kN/m².

• A special underpass duct. For installations going under roads and structures. SN30 ducts.







B class SN 8





A class SN 16



CABLE DUCT COLOURS

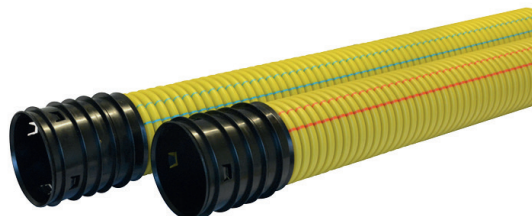
-  Ducts for protecting electrical cables are yellow
-  Ducts for protecting telecommunications cables are red
-  Underpass ducts are orange
-  Traffic light ducts are green

STRIPES OF DOUPLE WALL PIPES

-  Blue stripe: SN8/B
-  Red stripe: SN16/A

INTERIOR COLOURS OF VIPER3 TRIPLE WALL PIPES

-  Black interior: SN8/B
-  Same colour interior and exterior: SN16/A



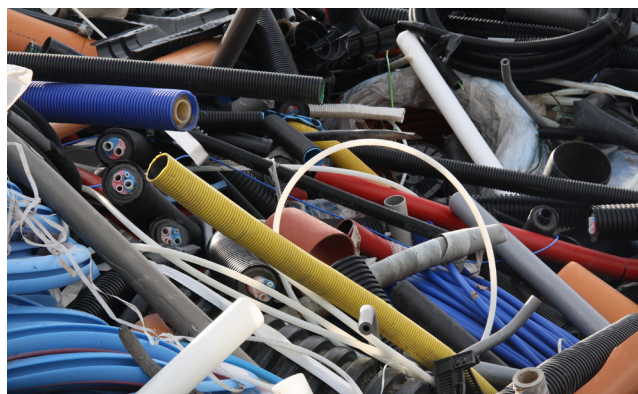
RECYCLING PLASTIC IN CONSTRUCTION SITE

As a raw material plastic is a valuable and can be reused. Also, the parts of plastic pipe systems are suitable for recycling. Surplus installation residues and discarded plastic system components (pipes, pipe connections, chambers and tanks) should be delivered to appropriate recycling companies.

- If there is only a small amount of plastic, it can be disposed with the rest of other building waste.
- Large quantities of plastic are recommended to be delivered directly to the plastic recycling company.
- Only take clean and separated plastic to a plastic recycling point, and make sure there aren't any metals, concrete, loose soil or other impurities in the pipes.

Recyclable plastics are used to make recycled plastic materials, which are further processed into plastic products by companies in the field. Plastic pipe systems manufacturers use recycled plastics in products whose intended use and quality requirements allow the use of recycled materials. Completed recycled plastic can still be utilized according to the waste hierarchy by incinerating it in waste power plants for energy.

For more information on the recycling of plastic ducts and a list of companies specializing in plastic recycling, please contact the Finnish Plastics Industries Federation.



asiakaspalvelu@pipelife.fi
Puh. +358 (0)30 600 2200
www.pipelife.fi, www.puhdastulevaisuus.fi



PIPELIFE 
always part of your life